

# INJURIES IN GREY BRUCE: ASSAULT

## WHO IS MOST AT RISK?

**Young males** aged **15 to 24** are at greatest risk of visiting an emergency department (ED) or being hospitalized for assault



The majority of ED visits and hospitalizations for assault are caused by unarmed physical attacks or fights without a weapon (not including sexual assault)

## HOW MANY INCIDENTS PER YEAR?

**439**

EMERGENCY  
DEPARTMENT  
VISITS

**20**

HOSPITALIZATIONS

**2**

DEATHS



## HOW DO WE COMPARE TO ONTARIO?

The local rate of emergency department visits due to assault in Grey Bruce is significantly higher than the Ontario rate. The local hospitalization rate is nearly equal to the Ontario rate, and the local homicide rate is too low to compare to other regions.

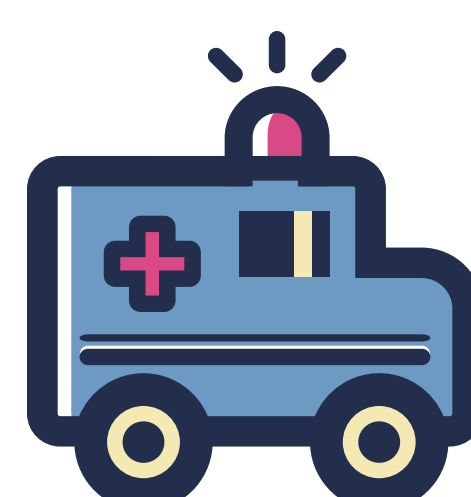
NUMBER OF ED VISITS DUE TO ASSAULT FOR  
EVERY 100,000 PERSONS, 2017

**ONTARIO**

**GREY BRUCE**



**242** visits  
per 100,000  
persons



**316** visits  
per 100,000  
persons



The local rate of emergency department visits due to assault is **higher** than the Ontario rate